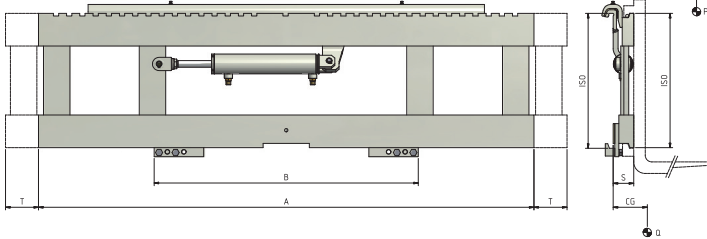


108

REINFORCED HOOK ON SIDESHIFT



Attachments designed to move the load in transvers direction than forklift way, to ease the grab and deposit of the load without making annoying operations with the forklift. Type 108 is a reinforced model and allow installation on forklift carriages narrower than the width of the same side shift.



REFERENCE	ATTACHMENT CAPACITY	LOAD CENTRE	ISO 2328 FEM	CARRIAGE WIDTH	MINIMUM FORK CARRIAGE	STROKE	THICKNESS	CENTER OF GRAVITY	WEIGHT
	P - Kg	CC - mm		A - mm	B - mm	T - mm	S - mm	CG - mm	Q - Kg
03GFA2C3014	2500	500	II	1300	1000	100	62	39	111
03GFA2C3033	2500	500	II	1400	1000	100	62	39	118
03GFA2C3016	2500	500	II	1500	1000	100	62	39	124
03GLL3C3099	5000	500	III	1400	1000	100	80	44	185
03GLL3C3011	5000	500	III	1500	1000	100	80	44	205
03GLL3C3014	5000	500	III	1660	1100	100	80	45	222
03GLL3C3042	5000	500	III	1800	1255	100	80	46	253
03GKR4C3001	4500	600	IV	1190	1000	100	95	40	180
03GKR4C3002	4500	600	IV	1420	1200	100	95	42	205
* 03GR04C3067	6300	600	IV	1190	1090	100	83	46	240
* 03GR04C3001	6300	600	IV	1420	1310	100	83	48	271
* 03GR04C3005	6300	600	IV	1800	1400	100	83	48	330
* 03GR04C5005	8000	600	IV	1800	1590	150	83	49	338
* 03GR04C5006	8000	600	IV	2000	1700	150	83	50	362
* 03GR04C5052	8000	900	IV	2200	1800	150	95	42	390
* 03GR04C5050	8000	1100	IV	2400	2000	150	95	45	450

* Heavy duty model with lower rollers



Hydraulic functions required: 1.
Maximum working pressure: 200 bar.

The references indicated on table are relative to standard attachments.
For the position of hydraulic connection see detail below.

