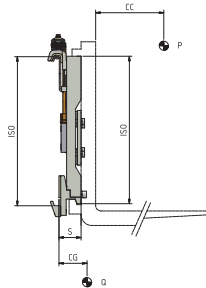
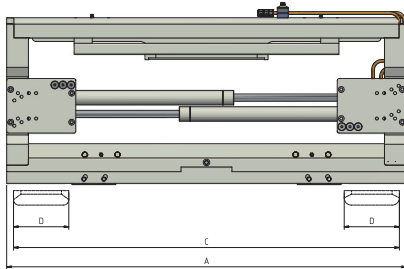




475 FORK POSITIONER



This model, realized with exclusive "moving housing" system (A.T.I.B. patented), guarantee a constant and synchronized movement of the forks and is completely in aluminum, thing that makes it perfect for following fields: food industry, pharmaceutical and chemical. On these attachments we suggest to mount FEM forks with max. length 1500 mm. Adjustable plates allow to use forks with different sections.

REFERENCE	ATTACHMENT CAPACITY	LOAD CENTRE	ISO 2328 FEM	CARRIAGE WIDTH	OPENING RANGE		FORK WIDTH	THICKNESS	CENTER OF GRAVITY	WEIGHT
	P - Kg	CC - mm			C MIN - mm	C MAX - mm		S - mm		
18EFA2C0001	2500	500	II	920	350	880	130	61	30	28
18EFA2C0002	2500	500	II	970	350	930	130	61	30	30
18EFA2C0005	2500	500	II	1040	350	1000	130	61	31	33
18EFA2C0006	2500	500	II	1100	350	1060	130	61	32	35
18EFA2C0007	2500	500	II	1150	350	1110	130	61	32	38
18ELL3C0001	5000	500	III	1020	350	940	150	70	31	51
18ELL3C0002	5000	500	III	1070	350	990	150	70	32	52
18ELL3C0003	5000	500	III	1150	350	1070	150	70	33	54
18ELL3C0004	5000	500	III	1170	350	1090	150	70	35	55
18ELL3C0005	5000	500	III	1250	350	1170	150	70	35	58
18ELL3C0006	5000	500	III	1350	350	1270	150	70	37	60



Hydraulic functions required: 1.
Maximum working pressure: 110 bar.

The references indicated on table are relative to standard attachments.
For the position of hydraulic connection see detail below.

